

Expiratory muscle strength training in patients after total laryngectomy

a feasibility pilot study

Author(s)

van Sluis, Klaske E.; Kornman, Anne F.; Groen, Wim G.; van den Brekel, Michiel W. M.; van der Molen, Lisette; Hoffman-Ruddy, Bari; Stuiver, Martijn M.

DOI

[10.1177/0003489420931889](https://doi.org/10.1177/0003489420931889)

Publication date

2020

Document Version

Final published version

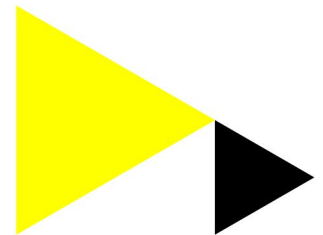
Published in

The Annals of otology, rhinology, and laryngology

[Link to publication](#)

Citation for published version (APA):

van Sluis, K. E., Kornman, A. F., Groen, W. G., van den Brekel, M. W. M., van der Molen, L., Hoffman-Ruddy, B., & Stuiver, M. M. (2020). Expiratory muscle strength training in patients after total laryngectomy: a feasibility pilot study. *The Annals of otology, rhinology, and laryngology*, 129(12), 1186-1194.
<https://doi.org/10.1177/0003489420931889>



General rights

It is not permitted to download or to forward/distribute the text or part of it without the consent of the author(s) and/or copyright holder(s), other than for strictly personal, individual use, unless the work is under an open content license (like Creative Commons).

Disclaimer/Complaints regulations

If you believe that digital publication of certain material infringes any of your rights or (privacy) interests, please let the Library know, stating your reasons. In case of a legitimate complaint, the Library will make the material inaccessible and/or remove it from the website. Please contact the library: <https://www.amsterdamuas.com/library/contact/questions>, or send a letter to: University Library (Library of the University of Amsterdam and Amsterdam University of Applied Sciences), Secretariat, Singel 425, 1012 WP Amsterdam, The Netherlands. You will be contacted as soon as possible.

Expiratory Muscle Strength Training in patients After Total Laryngectomy; A Feasibility Pilot Study

Annals of Otolaryngology & Laryngology
2020, Vol. 129(12) 1186–1194
© The Author(s) 2020
Article reuse guidelines:
sagepub.com/journals-permissions
DOI: 10.1177/0003489420931889
journals.sagepub.com/home/aor



Klaske E. van Sluis, MSc^{1,2*}, Anne F. Kornman, MSc^{1*} ,
Wim G. Groen, PhD³, Michiel W. M. van den Brekel, MD, PhD^{1,2,4},
Lisette van der Molen, PhD¹, Bari Hoffman-Ruddy, PhD⁵,
and Martijn M. Stuiver, PhD^{1,6,7}

Abstract

Objectives: Expiratory muscle strength training (EMST) is a threshold based device-driven treatment for improving expiratory pressure. EMST proved to be effective in different patient groups to improve cough function. To date, EMST has not been tested in the total laryngectomy population (TL).

Methods: This prospective, randomized case-series study examined feasibility, safety, and compliance of EMST in a group of TL participants and its effects on pulmonary function, physical exertion, fatigue, and vocal functioning. Ten TL participants were included in the study to perform a 4 till 8 weeks of EMST. Objective and subjective outcome measures included manometry, spirometry, cardio pulmonary exercise testing (CPET), voice recordings, and patient reported outcome measures. Group means were reported and estimates of the effect are shown with a 95% confidence interval, using single sample t-tests.

Results: Nine participants completed the full study protocol. Compliance to the training program was high. All were able to perform the training, although it requires adjustments of the device and skills of the participants. Maximum expiratory pressure (MEP) and vocal functioning in loudness improved over time. After EMST no changes were seen in other objective and subjective outcomes.

Conclusions: EMST appears to be feasible and safe after total laryngectomy. MEP improved over time but no improvement in the clinically relevant outcome measures were seen in this sample of relatively fit participants. Further investigation of the training in a larger group of participants who report specifically pulmonary complaints is recommended to investigate if the increase in MEP results in clinical benefits.

Level of Evidence: 4

Keywords

head and neck cancer, total Laryngectomy, cough, bronchoesophagology, voice, clinical outcomes research

Introduction

Total laryngectomy (TL), which involves surgical removal of the larynx, leads to lifelong changes in voice, swallowing and airway. Pulmonary driven speech can be re-established with insertion of a voice prosthesis, also called tracheoesophageal speech.¹ Compared to healthy individuals the voices of tracheoesophageal speakers have a rough voice quality, reduced loudness, and limited range.²

After TL pulmonary condition is affected as air entering the lungs via the stoma is not warmed and humidified by the nose and upper respiratory tract, which leads to impaired mucociliary clearance. Impaired mucociliary function is the main cause of pulmonary complaints such as increased mucus production and forced mucus

expectoration after TL.³⁻⁵ Warming and humidifying the inhaled air is a key factor in improving pulmonary condition. Over the years several options were developed: external humidifiers, stoma cloths (eg, bibs), and heat-moisture-exchange devices (HME-devices).⁵⁻⁸ Both stoma cloths and HME-devices are proved to be effective in everyday life and can reduce pulmonary problems in this patient group.⁹⁻¹¹ Nevertheless, pulmonary complaints including increased mucus production and forced mucus expectoration are still present after TL.^{12,13}

The altered anatomy results in an physiological altered cough function after TL. Removal of the larynx eliminates the ability to generate subglottic pressure prior to cough onset. Cough requires high expiratory airflows to aerosolize and remove material that is unable to be removed by

mucociliary action. Cough “strength” is determined by the ability to generate high expiratory pressures immediately prior to cough onset and by the volume of air that is expelled from the airways.¹⁴ With the absence of the ability to build up subglottic pressure, it is assumed that after a TL increased cough strength can only be achieved by increasing the volume and speed of cough expiratory airflow. To date, cough function after TL and the potential benefit of rehabilitation techniques have not been studied.

A well-known rehabilitation technique to improve cough function is expiratory muscle strength training (EMST). Recently, the use of EMST has been evaluated in several studies,¹⁵ including different patient groups such as Parkinson’s disease,^{14,16,17} multiple sclerosis,¹⁸ sleep apnea,¹⁹ head and neck cancer patients with dysphagia,²⁰ stroke,^{21,22} amyotrophic lateral sclerosis,²³ supracricoid partial laryngectomy,²⁴ and healthy participants.²⁵⁻²⁷ In several populations, to date, EMST has been shown to increase expiratory pressure generation by 30% to 150%, with an average increase of approximately 50% in a 4-week period of time.^{14,16,18,20,22,23,27} Most of the clinical studies cited above aimed at improving cough strength to improve clearing of aspiration of oral intake or saliva.^{16-18,20,22,24} EMST has not been tested in the TL population.

The main objective of the present study is to evaluate feasibility, safety, and compliance of EMST in individuals who have undergone TL. Subsequently, objective and subjective outcomes of the effects of EMST on pulmonary function, physical exertion, fatigue, and vocal functioning are assessed.

Materials and Methods

This prospective, randomized case-series study examined feasibility of EMST and its effects on pulmonary function and voice, in a group of male TL participants, who were at least a half year post surgery and, if applicable, post-operative (chemo) radiation. Participants were screened and recruited from the head and neck department of the Netherlands Cancer Institute-Antoni van Leeuwenhoek,

Amsterdam, The Netherlands. Exclusion criteria were: recurrence of head and neck cancer, a history of lung cancer, severe asthma, tuberculosis, uncontrolled or untreated hypertension, a heart attack in the last year, or abdominal hernia. The study was approved by the medical ethical review committee of the Netherlands Cancer Institute (registration nr. NL60167.031.16.).

Expiratory Muscle Strength Training and Adjustment to Use After TL

EMST150 (Aspire Products) is a threshold based device-driven treatment for improving expiratory pressure generating capacity. EMST employs a handheld training device consisting of a plexiglass tube. Inside the device is a variable tension spring controlling a valve that is calibrated in pressure, adjustable from 30 till 150 cmH₂O. When enough pressure is developed, the valve opens, allowing air to flow through the trainer. The patient is instructed to exhale forcefully through the device. In this way, EMST targets the rectus abdominis and internal intercostal muscles through a program of progressive overloading which is an exercise stimulus specific for forceful expiration.

To adjust the use of the EMST150 device for TL participants, we developed and produced an adaptor to connect the device at the adhesive baseplate in front of the tracheostoma. This adaptor contains an opening on top to allow inhalation which can be occluded manually, a small lumen for use of the voice prosthesis plug, and a tube which enables connection with a manometer (Figures 1 and 2).

EMST Study Training Protocol

All participants performed 4 weeks of EMST (period A) which consisted of five sets of five repetitions across 5 days per week. Strength measurements and subsequent adjustment of the pressure of the EMST device were performed at baseline and after each training week. Participants were instructed to perform their training sessions at home and log each training with details in a diary to check compliance. During the

¹Department of Head and Neck Oncology and Surgery, Netherlands Cancer Institute-Antoni van Leeuwenhoek, Amsterdam, Noord-Holland, The Netherlands

²Amsterdam Center for Language and Communication, University of Amsterdam, Amsterdam, The Netherlands

³Department of Psychosocial Research and Epidemiology, Netherlands Cancer Institute, Amsterdam, The Netherlands

⁴Department of Maxillofacial Surgery, Academic Medical Center, Amsterdam, The Netherlands

⁵School of Communication Sciences and Disorders, University of Central Florida, Orlando, FL, USA

⁶Center for Quality of Life, Netherlands Cancer Institute, Amsterdam, The Netherlands

⁷ACHIEVE, Faculty of Health, Amsterdam University of Applied Sciences, Amsterdam, The Netherlands

*Shared first authorship, these authors contributed equally

Corresponding Author:

Anne F. Kornman, MSc, Department of Head and Neck Oncology and Surgery, Netherlands Cancer Institute-Antoni van Leeuwenhoek, plesmanlaan 121, Amsterdam, Noord-Holland 1066 CX, The Netherlands.
Email: a.kornman@nki.nl

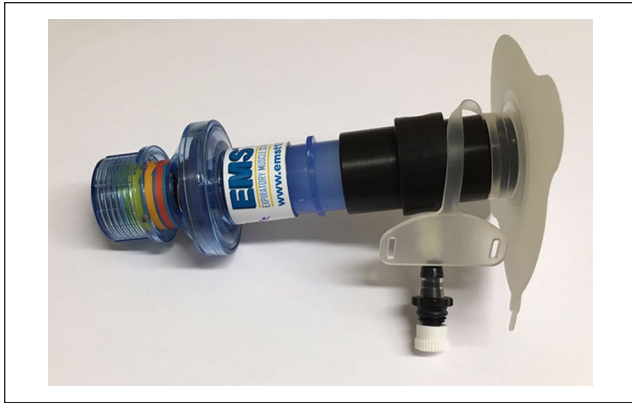


Figure 1. EMST150 connected to a baseplate with the adapter and voice prosthesis plug present.



Figure 2. EMST150 during practice, connected to the baseplate attached to the tracheostoma. The index finger is used to occlude the opening on top during forced exhalation.

weekly visits to the hospital, the researchers monitored the participants' compliance by discussing their training results. The pressure of the device was set at approximately 80% of the participant's mean Maximum Expiratory Pressure (MEP). In the following 4 weeks (period B), participants were allocated to different protocols depending on the group they were randomized to. Participants in group 1 discontinued the training. Participants in group 2 continued EMST for another 4 weeks, but with a lower frequency of 2 days per week. Block-randomization in blocks of four with stratification for age was performed with help of Alea software.

Adjustments in training procedures with the EMST150 device were needed. Before each training session, the participants' voice prosthesis had to be blocked with a plug to avoid air escaping through the voice prosthesis into the esophagus. Participants were instructed to connect the EMST device at the adhesive in front of the tracheostoma, take a deep breath, close the opening on top of the adaptor with a finger, and exhale forcefully into the EMST device until enough pressure was built up to open the valve inside.

Feasibility, Safety, and Compliance

The main objective of the study was to evaluate feasibility, safety, and compliance with the EMST program. Any difficulties regarding participants' performance of the training and assessment procedures were documented. Participants were instructed to log every training session and reflect on their experiences in a diary. At the end of the training program participants filled in a short questionnaire on whether they found the training feasible and whether they could stay motivated during the period of training.

Objective and Subjective Outcome Measures

The effects of EMST on pulmonary function, physical exertion, fatigue, and vocal functioning are assessed with manometry, spirometry, cardio pulmonary exercise testing (CPET), voice recordings, and questionnaires. Time points of the assessments are shown in Table 1. MEP in cmH_2O was obtained with a calibrated digital manometer (Druck DPI 705) connected to the adapter whilst the EMST device was adjusted to the maximum pressure of $150\text{cmH}_2\text{O}$ and connected to the tracheostoma. Participants were instructed to sit, take a deep breath, occlude the adapter, and exhale as forcefully as possible. Peak Expiratory Flow (PEF) in L/min was obtained with a Micro I spirometer combined with a Microgard II filter (PT Medical) which was placed directly on the baseplate of the stoma. Participants were instructed to inhale calm but deep and then exhale as forcefully and fast as they could. A series of three forced expirations was used to obtain MEP and PEF, the mean of the three trials was used for the analysis. With a calibrated ergospirometry system (Jaeger Masterscreen CPX, Houten, The Netherlands), connected to the stoma, vital capacity (VC), and forced expiratory volume in the first second (FEV1) were measured. Participants performed a Cardio Pulmonary Exercise Test (CPET) on an electronically braked cycle ergometer (Lode Corival, ProCare, Groningen, The Netherlands). An adapter was made to fit the flow turbine directly to the baseplate in front of the tracheostoma and a headband for fixation was used to support the adapter and flow turbine. The ventilatory efficiency was defined by minute volume of expired air relative to volume of CO_2 produced (VE/VCO_2). Patients cycled till they had reached a respiratory exchange ratio of 1.0 thus precluding them from a maximal exertion. Directly after finishing the test, participants were asked to rate their perceived level of exertion and dyspnea on a Borg scale.^{28,29} Voice recordings were made with a head mounted microphone and recorded with Audacity software.³⁰ Participants were instructed to perform a sustained vowel /a/ as long as possible to measure maximum phonation time (MPT). Vocal range in Herz (Hz) and dynamic range in deciBel (dB) were measured as an outcome of the difference between the lowest and highest and softest and loudest /a/ produced,

Table 1. Overview of the Assessed Outcome Measures per Time Point, Visualization of Period A and B Over Time.

	Wk 0	Wk 1	Wk2	Wk 3	Wk 4	Wk 8
	Period A				Period B	
Manometry—MEP	X	X	X	X	X	X
Spirometry—PEF	X	X	X	X	X	X
Spirometry—VC, FEV1	X				X	
CPET—VE/VCO ₂ , Borg exertion-, Borg dyspnea scale	X				X	
Voice assessment—Vocal range (Hz and dB), MPT	X				X	X
Short fatigue questionnaire ³³	X				X	X
Clinical COPD Questionnaire ³⁴	X				X	X
Voice Handicap Index-10 ³²	X				X	X

Abbreviations: CPET, Cardio Pulmonary Exercise Testing; FEV1, Forced Expiratory Volume in the first second; MEP, Maximum Expiratory Pressure; MPT, Maximum Phonation Time; PEF, Peak Expiratory Flow; VC, Vital Capacity.

respectively. The best of three attempts was used for each value. All voice recordings were acoustically analyzed with PRAAT software.³¹ Self-reported vocal functioning is assessed with the Voice Handicap Index-10 (VHI-10),³² self-reported fatigue with the Short Fatigue Questionnaire (SFQ),³³ and self-reported pulmonary functioning with the clinical COPD questionnaire (CCQ).³⁴

Statistical Analysis

Due to lack of preliminary data with regard to pulmonary exercise programs in TL patients, there was no meaningful way to perform sample size calculations related to the quantitative outcome. All data was analyzed using SPSS software.³⁵ Accordingly, no significance tests were performed. Group means were estimated with a 95% confidence interval, using single sample t-tests.

Results

Ten participants were included and signed informed consent. Participants age ranged from 50 to 73 years, and all were tracheo-esophageal speakers (characteristics are presented in Table 2).

Feasibility, Compliance, and Safety

Using the EMST device with help of an adapter on the tracheostoma of the TL participants appeared to be generally feasible. All participants could perform the training. One participant withdrew from the study after 1 week due to unrelated medical reasons. For the remaining nine participants, compliance to the allocated training program was 95.5%. According to the final short questionnaire, participants did not experience problems to stay motivated during the training weeks. Minor problems included

leakage of air underneath the adhesive, which was reported by four of the participants. Two participants occasionally experienced dizziness during and shortly after the training. Three participants were not able to plug the voice prosthesis prior to the training, and continued training without plug. From the six participants who did plug their voice prosthesis before training, three mentioned that plugging was a hassle.

Regarding to safety, one adverse event occurred with one of the participants in his fourth EMST training week. After a training session with the EMST, the voice prosthesis was not in situ anymore. A new voice prosthesis was placed and an X-thorax was made which showed that the voice prosthesis was not in the lungs. All participants and the medical ethical review committee were informed.

Objective and Subjective Outcome Measures

Results on pulmonary function, physical exertion, fatigue, and vocal functioning are presented in Table 3. We observed a non-linear increase in the manometry outcome MEP. During the first four training weeks mean MEP increased from 125.5 cmH₂O to 174.8 cmH₂O during the first 4 weeks (95% CI: baseline 110.4-140.6, 4 week 152.8-196.8). After 4 weeks, MEP stabilized, with no evidence for differences in detraining between group 1 and group 2 (Figure 3). Overall, MEP decreased slightly to a mean of 164.9 cmH₂O (95% CI: 141.8-189.0) at the end of the follow-up. Three of the nine participants achieved a MEP-score above 187.5 cmH₂O during the first four training weeks. For those participants, training at 80% of the mean MEP was not possible from that moment onward, since the maximum setting of the EMST is 150 cmH₂O. These participants continued their training on the maximum setting of the EMST150-device. The three participants who used no plug during training showed increase of the MEP as well.

Table 2. Participant Characteristics.

Participant	Age in Years	Time since TL in Years	Timing Radiotherapy	Flap Reconstruction	Neck Dissection	Tracheo Esophageal Speech: Manually/Hands Free Device	Randomization Group 1 = Stop Training 2 = Continue Training
1	65	13	Post-surgery	No	Both sides	Freehands	2
2	67	18	Pre-surgery	Unknown [†]	Unknown [†]	Manually	1
3	50	3	Pre-surgery	No	Both sides	Both, alternating	1
4	68	1	Pre-surgery	PM-flap	No	Manually	2
5	57	15	Pre-surgery	No	Both sides	Freehands	1
6	63	7	Pre-surgery	No	No	Manually	2
7	68	3	Pre-surgery	No	Both sides	Both, alternating	1
8	57	10	Post-surgery	No	Both sides	Freehands	2
9	78	3	Post-surgery	No	Left side	Manually	1
10	73	20	Pre-surgery	Unknown [†]	Unknown [†]	Manually	2

Abbreviations: PM-flap, Pectoralis Major flap; TL, total laryngectomy.

[†]No surgical information was available.

Table 3. Mean, Standard Deviation, and Confidence Interval for the Outcome Measures of the Total Group of Participants at Baseline, Week 4 and Week 8.

	Baseline		Wk 4		Wk 8	
	Mean (SD)	95% CI Lower—Upper	Mean (SD)	95% CI Lower—Upper	Mean (SD)	95% CI Lower—Upper
MEP—cmH ₂ O	125.5 (19.6)	110.4-140.6	174.8 (28.6)	152.8-196.8	164.9 (30.0)	141.8-189.0
PEF—L/min	455.9 (116.4)	374.8-537.0	445.5 (116.432)	356.0-535.0	405.3 (112.7)	318.8-492.0
CPET—VE/VCO ₂	29.5 (4.7)	25.9-33.1	28.4 (2.8)	26.3-30.57	-	-
Borg exertion scale	13.0 (1.7)	11.7-14.3	12.4 (1.3)	11.4-13.5	-	-
Borg dyspnea scale	2.7 (2.2)	1.0-4.4	2.2 (1.9)	0.8-3.7	-	-
FEV1—L	3.2 (0.7)	2.6-3.7	3.0 (0.6)	2.5-3.5	-	-
VC—L	4.3 (1.0)	3.5-5.1	4.1 (0.8)	3.5-4.8	-	-
Vocal range—Hz	144.6 (98.9)	62.0-227.3	147.0 (63.0)	94.4-199.6	149.0 (101.4)	64.3-233.7
Vocal range—dB	26.4 (5.6)	21.7-31.0	31.9 (3.7)	28.8-35.0	27.6 (5.4)	23.1-32.2
MPT—sec	12.5 (7.9)	5.9-19.0	12.2 (8.5)	5.1-19.3	12.0 (6.8)	6.2-17.7
VHI-10 ³²	15.6 (10.0)	7.3-24.0	16.0 (9.7)	8.0-24.2	16.5 (8.8)	9.1-23.9
SFQ ³³	8.1 (5.1)	4.2-12.0	8.44 (4.2)	5.2-11.7	9.1 (4.7)	5.5-12.7
CCQ total score ³⁴	1.2 (0.8)	0.6-1.8	1.3 (0.7)	0.7-1.9	1.2 (0.6)	0.8-1.7

Abbreviations: CCQ, Clinical COPD Questionnaire; CPET, Cardio Pulmonary Exercise Testing; FEV1, forced expiratory volume in the first second; MEP, Maximum Expiratory Pressure; MPT, Maximum Phonation Time; PEF, Peak Expiratory Flow; SFQ, Short Fatigue Questionnaire; VC, Vital capacity; VHI-10, Voice Handicap Index 10 item version.

We observed no effect on spirometry outcome PEF over time (Figure 4). Mean PEF values were 455.9 L/min at baseline and 445.5 L/min after 4 weeks (95% CI: baseline 374.8-537.0, 4 week 356.0-535.0). In this sample, no effect of detraining was seen in PEF after reducing or stopping the training with a mean PEF value of 405.3 at week 8 (95% CI: 318.8-492.0).

No changes over time were found for self-reported pulmonary problems (CCQ), vocal functioning (VHI-10), fatigue (SFQ). No differences were found for outcomes in physical exertion (CPET, Borg scales). Objective assessment

of vocal functioning showed no differences in MPT and vocal range in Hz. Exception was dynamic range in dB, which increased from 26.4 dB (95% CI: 21.7-31.0) to 31.9 dB (95% CI: 28.8-35.0) after 4 weeks of training. After period B vocal range in dB returned back to baseline values (mean 27.6 dB 95% CI: 23.1-32.2).

Discussion

To date, this is the first study to investigate feasibility, safety, and compliance of EMST in a group of TL participants.

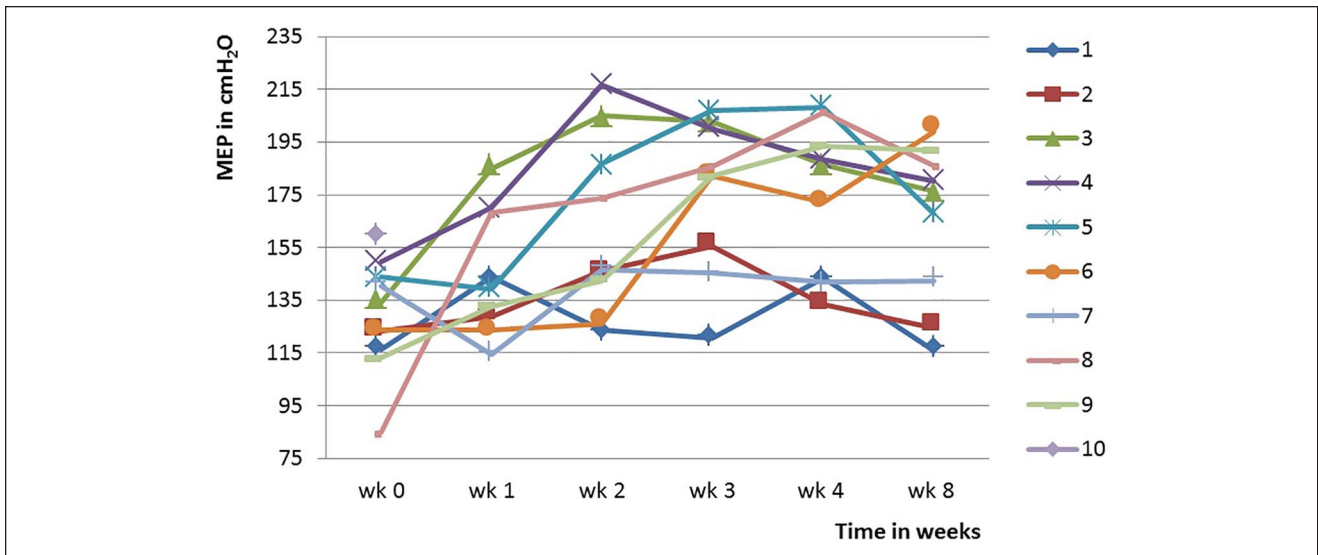


Figure 3. Individual Maximum Expiratory Pressure (MEP) scores over time in cmH₂O.

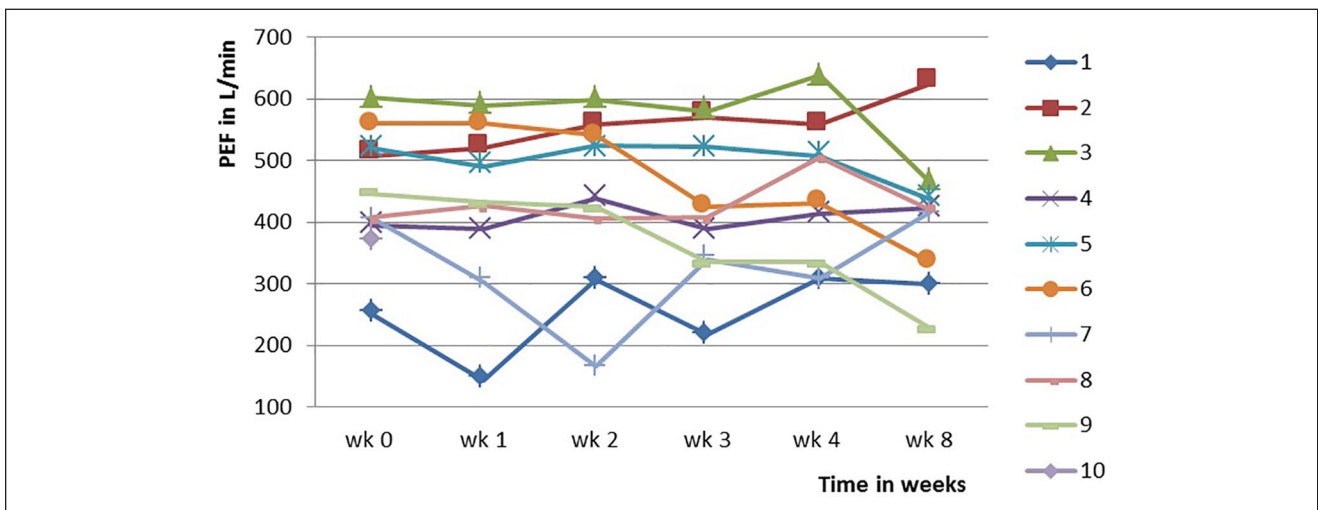


Figure 4. Individual Peak Expiratory Flow (PEF) scores over time in liter per minute.

EMST appears to be somewhat challenging, but feasible. MEP improved over time but this did not seem clinically relevant for this group of relatively fit participants.

Challenges encountered the need for an adaptor, skills of the participants with plugging the voice prosthesis, placing the EMST150 with an adaptor on the tracheostoma, and creating an airtight seal. One safety issue occurred with a participant presenting without a voice prosthesis after a training session. Nevertheless, compliance to the training program was high (>95%).

The results show a clear increase in MEP over time in contrast to PEF values in which no change was seen. The increase of MEP as a result of EMST is consistent with both biological rationale and former findings.^{14,16,18,20,22,23,25}

Baseline MEP scores were higher than predicted for eight out of ten participants when compared with reference values for healthy adults.³⁶ No normative MEP values for TL patients are found. The higher than expected MEP scores might be the effect of frequent coughing and forced expectoration which is present after TL. The high MEP values are in contrast with the study of Hutcheson et al,²⁰ in which head and neck cancer patients suffering from chronic aspiration were included. Their group showed reduced average MEPs at baseline.²⁰ Palmer et al²⁴ reported a good MEP at baseline in their group after partial laryngectomy and reasoned their candidates must have good pulmonary support to tolerate some amount of aspiration during recovery.

We observed no changes over time for PEF outcomes. Contrary to the MEP scores, baseline scores were lower than predicted for seven participants compared with reference values.³⁷ No normative values for PEF in TL patients are found. In the group of partial laryngectomy patients performing EMST a significant increase in peak cough flow (L/min) was found, from below normal prior to the intervention to within normal range after training.²⁴ Peak expiratory flow rate also increased significantly with training in a group of elderly.²⁶ It is worth questioning why PEF values did not improve in the studied group of TL participants. A possible reason is impaired cough technique. As there is no glottic closure, the higher built up pressure does not lead to increased flow. Besides, no special attention was paid at the exhaling technique (ie, generating the force primarily using the rectus abdominis muscle, and keeping the thorax maximally expanded during the first part of the forced expiration) during the training.

The increase in MEP and vocal range in dB did not lead to an improvement in the clinical relevant outcome measures regarding pulmonary function, physical exertion, fatigue, and vocal functioning. It was disappointing to see that no clinically relevant benefits were found in the self-reported outcome measures. This might be the result of a sample of relatively fit TL participants which showed high baseline values in MEP and who mentioned no specific pulmonary complaints. Despite an improvement in loudness, related to the dynamic range in dB after 4 weeks of training, no changes in self-reported vocal functioning (VHI-10) were seen.

Although this pilot study offered useful insights, there are some limitations which should be mentioned related to the included group, use of EMST device and performance of training and measurements. Because of the small number of participants the results of this first EMST study in a TL group must be interpreted with caution. The outcomes cannot be generalized to the entire TL population. In particular, because the participants in our sample were all male, all fluent tracheoesophageal speakers, and relatively fit from the start, they may have progressed less and perceived less benefit, compared to what might be expected from TL patients who are less fit and report explicit coughing problems. Participants who achieved a MEP-score above 187.5 cmH₂O continued the training with the device set at the maximum work load of 150 cmH₂O. It remains unclear if the increase in MEP would have been even larger in case of training with an EMST device with a wider range. To measure the effect of EMST with manometry, spirometry and CPET, adjustments were needed for use on the tracheostoma. Problems creating an airtight seal and plugging the voice prosthesis and the resulting air leakage could have influenced the results of the training and the measured outcomes negatively. VHI-10, SFQ, CCQ, and

Borg scales were best available questionnaires, although not specifically validated for TL population, and should therefore be interpreted with caution.

For future research, it should be considered to test EMST in a group of TL participants without plugging the voice prosthesis prior to the training. If this also results in improvements, users can be spared the hassle of plugging. Next to this, special attention should be given towards exhaling technique used during the training. It is recommended to assess effectiveness of the training in a large group of participants which includes patients who explicitly report pulmonary problems, less fit elderly participants, and women. Finally, there are still unanswered questions about the association between patients characteristics (eg, time since TL, flap reconstruction, neck dissection etc.) and effectiveness of EMST.

Conclusion

This pilot feasibility study indicates that an EMST program is generally safe and feasible in individuals following TL, although it requires adjustments of the device and skills of the participants to perform the training. Compliance to the training program was high. The EMST leads to an increase MEP, no evident changes in PEF outcomes were found. An increase in dynamic range in dB was seen, but this did not result in less reported voice handicap measured with VHI-10. No effects were found in the voice parameters MPT and vocal range in Hz, and ventilatory efficiency during exercise. For this relatively fit group of TL participants, clinical relevant benefits measured with self-reported clinical outcomes could not be determined. It is recommended to assess EMST in a less fit TL population who specifically report pulmonary problems to further investigate potential clinical benefit.

Acknowledgments

The authors acknowledge Atos medical (Malmö, Sweden) for their research grant, which contributes to the existing infrastructure for quality of life research of the Department of Head and Neck Oncology and Surgery. The authors acknowledge Aspire Products for providing EMST training devices free of charge to study participants. FJM Hilgers, emeritus professor and emeritus head and neck surgeon at the Netherlands Cancer Institute and University of Amsterdam is greatly acknowledged for his innovative idea, enthusiasm, and support to test EMST in total laryngectomy patients.

Declaration of Conflicting Interests

The author(s) declared no potential conflicts of interest with respect to the research, authorship, and/or publication of this article.

Funding

The author(s) disclosed receipt of the following financial support for the research, authorship, and/or publication of this article: The Netherlands Cancer Institute receives a research grant from Atos Medical (Malmö, Sweden), which contributes to the existing infrastructure for quality of life research of the Department of Head and Neck Oncology and Surgery. Aspire Products (Atlanta, USA) provided all EMST training devices free of charge to study participants. The funders, Atos Medical and Aspire Products, had no involvement in the study design, analysis, or writing of the manuscript. The authors have no other funding, financial relationships, or conflicts of interest to disclose.

ORCID iD

Anne F. Kornman  <https://orcid.org/0000-0003-0004-1868>

References

- van Sluis KE, van der Molen L, van Son RJ, Hilgers FJ, Bhairosing PA, van den Brekel MW. Objective and subjective voice outcomes after total laryngectomy: a systematic review. *Eur Arch Otorhinolaryngol*. 2018;275(1):11-26.
- Drugman T, Rijckaert M, Janssens C, Remacle M. Tracheoesophageal speech: a dedicated objective acoustic assessment. *Comput Speech Lang*. 2015;30(1):16-31.
- Maurizi M, Paludetti G, Almadori G, Ottaviani F, Todisco T. Mucociliary clearance and mucosal surface characteristics before and after total laryngectomy. *Acta Otolaryngol*. 1986;102(1-2):136-145.
- Hilgers FJ, Ackerstaff AH. Comprehensive rehabilitation after total laryngectomy is more than voice alone. *Folia Phoniatr Logop*. 1999;52(1-3):65-73.
- van den Boer C, Muller SH, van der Noort V, et al. Effects of heat and moisture exchangers on tracheal mucociliary clearance in laryngectomized patients: a multi-center case-control study. *Eur Arch Otorhinolaryngol*. 2015;272(11):3439-3450.
- Bień S, Okła S, van As-Brooks CJ, Ackerstaff AH. The effect of a Heat and Moisture Exchanger (Provox® HME) on pulmonary protection after total laryngectomy: a randomized controlled study. *Eur Arch Otorhinolaryngol*. 2010;267(3):429-435.
- Parrilla C, Minni A, Bogaardt H, et al. Pulmonary rehabilitation after total laryngectomy a multicenter time-series clinical trial evaluating the provox XtraHME in HME-naïve patients. *Ann Otol Rhinol Laryngol*. 2015;124(9):706-713.
- Hilgers F, Aaronson N, Schouwenburg P, Zandwijk N. The influence of a heat and moisture exchanger (HME) on the respiratory symptoms after total laryngectomy. *Clin Otolaryngol Allied Sci*. 1991;16(2):152-156.
- Quail G, Fagan JJ, Raynham O, Krynauw H, John LR, Carrara H. Effect of cloth stoma covers on tracheal climate of laryngectomy patients. *Head Neck*. 2016;38(suppl 1):E480-E487.
- Mérol JC, Charpiot A, Langagne T, Hémar P, Ackerstaff AH, Hilgers FJ. Randomized controlled trial on postoperative pulmonary humidification after total laryngectomy: external humidifier versus heat and moisture exchanger. *Laryngoscope*. 2012;122(2):275-281.
- Lansaat L, van den Boer C, Muller SH, et al. Ex vivo humidifying capacity and patient acceptability of stoma cloths in laryngectomized individuals. *Head Neck*. 2017;39(5):921-931.
- Bickford J, Coveney J, Baker J, Hersh D. Validating the changes to self-identity after total laryngectomy. *Cancer Nurs*. 2019;42(4):314-322.
- Op de Coul B, Ackerstaff A, Van As C, et al. Quality of life assessment in laryngectomized individuals: do we need additions to standard questionnaires in specific clinical research projects? *Clin Otolaryngol*. 2005;30(2):169-175.
- Pitts T, Bolser D, Rosenbek J, Troche M, Okun MS, Sapienza C. Impact of expiratory muscle strength training on voluntary cough and swallow function in Parkinson disease. *Chest*. 2009;135(5):1301-1308.
- Laciuga H, Rosenbek JC, Davenport PW, Sapienza CM. Functional outcomes associated with expiratory muscle strength training: narrative review. *J Rehabil Res Dev*. 2014;51(4):535-546.
- Kuo Y-C, Chan J, Wu Y-P, Bernard JR, Liao Y-H. Effect of expiratory muscle strength training intervention on the maximum expiratory pressure and quality of life of patients with Parkinson disease. *NeuroRehabilitation*. 2017(Preprint):1-8.
- Troche MS, Okun MS, Rosenbek JC, et al. Aspiration and swallowing in Parkinson disease and rehabilitation with EMST: a randomized trial. *Neurology*. 2010;75(21):1912-1919.
- Silverman EP, Miller S, Zhang Y, Hoffman-Ruddy B, Yeager J, Daly JJ. Effects of expiratory muscle strength training on maximal respiratory pressure and swallow-related quality of life in individuals with multiple sclerosis. *Mult Scler J Exp Transl Clin*. 2017;3(2):2055217317710829.
- Kuo Y-C, Song T-T, Bernard JR, Liao PY-H. Short-term expiratory muscle strength training attenuates sleep apnea and improves sleep quality in patients with obstructive sleep apnea. *Respir Physiol Neurobiol*. 2017;243:86-91.
- Hutcheson KA, Barrow MP, Plowman EK, et al. Expiratory muscle strength training for radiation-associated aspiration after head and neck cancer: a case series. *Laryngoscope*. 2018;128(5):1044-1051.
- Park JS, Oh DH, Chang MY, Kim KM. Effects of expiratory muscle strength training on oropharyngeal dysphagia in subacute stroke patients: a randomised controlled trial. *J Oral Rehabil*. 2016;43(5):364-372.
- Hegland KW, Davenport PW, Brandimore AE, Singletary FF, Troche MS. Rehabilitation of swallowing and cough functions following stroke: an expiratory muscle strength training trial. *Arch Phys Med Rehabil*. 2016;97(8):1345-1351.
- Plowman EK, Tabor-Gray L, Rosado KM, et al. Impact of expiratory strength training in amyotrophic lateral sclerosis: results of a randomized, sham-controlled trial. *Muscle Nerve*. 2019;59(1):40-46.
- Palmer AD, Bolognone RK, Thomsen S, Britton D, Schindler J, Graville DJ. The safety and efficacy of expiratory muscle strength training for rehabilitation after supracricoid partial laryngectomy: a pilot investigation. *Ann Otol Rhinol Laryngol*. 2018;3489418812901.

25. Baker S, Davenport P, Sapienza C. Examination of strength training and detraining effects in expiratory muscles. *J Speech Lang Hear Res.* 2005;48(6): 1325-1333.
26. Park JS, Oh DH, Chang MY. Effect of expiratory muscle strength training on swallowing-related muscle strength in community-dwelling elderly individuals: a randomized controlled trial. *Gerodontology.* 2017;34(1):121-128.
27. Kim J, Davenport P, Sapienza C. Effect of expiratory muscle strength training on elderly cough function. *Arch Gerontol Geriatr.* 2009;48(3):361-366.
28. Borg G. *Borg's Perceived Exertion and Pain Scales.* Champaign, IL: Human Kinetics; 1998.
29. Borg GA. Psychophysical bases of perceived exertion. *Med Sci Sports Exerc.* 1982;14(5): 377-381.
30. Mazzoni D, Dannenberg R. *Audacity* [software]. Pittsburg, PA: The Audacity Team; 2000.
31. Boersma P. Praat, a system for doing phonetics by computer. *Glott Int.* 2001;5(9/10):341-345.
32. Rosen CA, Lee AS, Osborne J, Zullo T, Murry T. Development and validation of the voice handicap index-10. *Laryngoscope.* 2004;114(9):1549-1556.
33. Alberts M, Smets E, Vercoulen J, Garssen B, Bleijenberg G. 'Verkorte vermoeidheidsvragenlijst': een praktisch hulpmiddel bij het scoren van vermoeidheid. *Ned Tijdschr Geneeskd.* 1997;141(31):1526-1530.
34. Van der Molen T, Willemse BW, Schokker S, Ten Hacken NH, Postma DS, Juniper EF. Development, validity and responsiveness of the Clinical COPD Questionnaire. *Health Qual Life Outcomes.* 2003;1(1):13.
35. *IBM SPSS Statistics for Windows* [computer program]. Version 22.0. Armonk, NY: IBM Corp; 2013.
36. Evans JA, Whitelaw WA. The assessment of maximal respiratory mouth pressures in adults. *Respir Care.* 2009;54(10): 1348-1359.
37. ERS - Normal Values. 2011-2019; <https://vitalograph.co.uk/resources/ers-normal-values>. Accessed July 26, 2019.